



## **NeoGPS Navigator V. 3.1** **(Software Manual)**

Congratulations! You've chosen Navigator, the forerunner in personal navigation aid software specially designed for Pocket PC users that are busy and constantly on the move! Using the Navigator software, you can execute the navigation on map that is compressed into smaller memory, capable with our advanced map data compression technology. Once you've installed the Navigator on your Pocket PC, you can track yourself anywhere in the installed map ! With an easy and quick controllable interface, the Navigator is smart and enjoyable for mobile users everywhere.

## Contents

1. How to install	
1.1 System Requirements for Pocket PC	3
1.2 Installation	3
2. How to operate	
2.1 Starting the Navigator	4
2.2 Menus	4
2.2.1 Open	5
2.2.2 GPS	8
2.2.3 POI	10
2.2.4 MSG	12
2.3 Icons	13
2.4 Error Messages	17
3. Customer Service	18
4. Safety Control	18

## 1. How to Install

### 1.1 System Requirements for Pocket PC

O/S : Win CE 3.0, Pocket PC 2002, Win CE.NET  
CPU : StrongArm, SH3, MIPS  
RAM: 32 MB or up

The ActiveSync software should be preinstalled on your desktop PC, which is connected by an Pocket PC cradle. Most Pocket PC manufacturers provide the ActiveSync software and Pocket PC cradle. You can also easily retrieve the ActiveSync software at [www.microsoft.com](http://www.microsoft.com).

### 1.2 S/W Installation and Map copy

- 1) Insert the CD-ROM into the CD ROM driver on your PC and open it.
- 2) Select one of the following Navigator S/W accordingly as your Pocket's CPU:
  - Ⓒ iPAQ (ARM)
  - Ⓒ Jornada (SH3)
  - Ⓒ Cassiopeia (MIPS)

- 3) Click Modify when Install Shield Wizard displays.
  - 4) Click the Next button.
  - 5) Check the box of the Main Application when the Select Component window displays.
  - 6) Click the Next button.
  - 7) Follow the on-screen instructions.
  - 8) Copy Map set(nms + nmws) into mobile device folder of PDA.
- \* **Warning** : The Navigator software will be deleted from your Pocket PC if its battery power runs out.

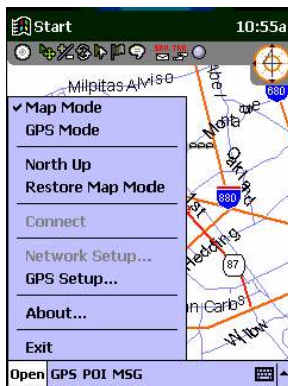
## 2. How to Operate

### 2.1 Starting the NeoGPS

Tap the start menu on your Pocket PC and select Navigator. The map choice column should appear when you select Navigator. Panning is the default mode with the circle zoom-in control. In this mode, you can move the map in whichever direction you want and zoom in any part of the map.

**To move the map** : Draw a line in the direction you want to move the map and it will move in that direction. The longer you draw the line, the further the map will move.

### 2.2.1 Open



#### **Map Mode (Default setting)**

The display switches over to the mapping interface from the GPS interface when you tap this control.

#### **GPS Mode**

The display will switch over to the GPS interface from the mapping interface when you tap this control.

**Speed** : Your current speed

**Altitude** : Your current elevation

**Lat.** : Your current latitude

**Long.** : Your current longitude

**Satellites** : The number of GPS satellites down linked



The bottom portion of the display shows the Greenwich Mean Time (GMT). The change of your current latitude and longitude will display as you move. The right bottom of the graphic display is a constellation view of the down linked GPS satellites. (The center of the circle is the zenith of your position)

### **North Up (Default setting)**

The azimuth of the map will return to the default setting (North is upward).

### **Restore Map Mode**

The display will return to the original display of selected map. When you open another area map after exit, you must tap this button to get the original display of selected map.

### **Connect**

This control is for the wireless Internet link and is inactive in version 3.1 Software.

### **Network Setup**

This control is for the wireless Internet link and is inactive in version 3.1 Software.

### **GPS Setup**

**Port Number :** Select a COM port from your Pocket PC, which will enable the GPS receiver to communicate with each other. Refer to the manual of your Pocket PC. (iPAQ – COM4, Cassiopeia / Jornada – COM2)

**Baud Rate :** This is to select a data transferring speed between your Pocket PC and GPS receiver. The baud rate depends on your GPS receiver. Check your GPS receiver's manual. The NeoGPS CF supports 19200 bps and NeoGPS COMBO 4800 bps.

**Reset GPS :** When you use the GPS at around 300km away from previous place, you may tap the button to delete GPS's Almanac Data of previous place so that the GPS can search the fresh GPS Data in shorter term.

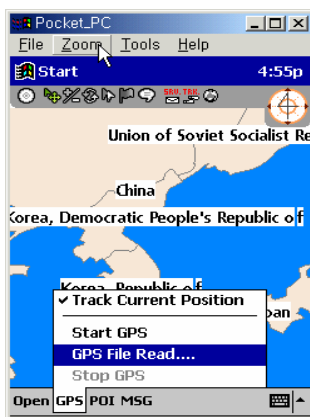
### **About**

Copyright and Version Information

### **Exit**

Close the Navigator.

### 2.2.2 GPS



This menu is for the GPS to be enabled or disabled. Tap GPS Start to enable the GPS and Touch GPS Stop to disable it. You can track yourself on the map in real time and use the navigation guide as the direction for your preset destination.

#### **Track Current Position**

This control requires that GPS be enabled. The default control is on. You can track yourself on the map in real time. A red arrow points in the direction you move.

Automatic Centering : Your current real position displays (red arrow) automatically in the center of the map. It will re-center the position when you move to the edge of the map displayed.

**When you stop or move at low speed** : The pointing of the arrow fluctuates when you are at a stop or on the move at a very low speed (below 10 km). This instability is not a malfunction but caused by the inherent GPS mechanism.

### **GPS Start**

Navigator will start to retrieve the position data from the GPS receiver when you tap this icon as follows(The GPS receiver should be properly connected on the Pocket PC beforehand.).

- GPS Start > Save or not > YES > File Naming > Start
- GPS Start > Save or not > NO > Start

**Please note** : It may take up to 90 seconds to fix the position with cold start and up to 45 seconds with warm start.

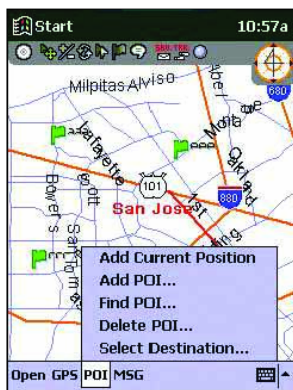
### **GPS File Open**

You tap this control to open saved GPS file.

### **GPS Stop**

Navigator will stop retrieving the position data from the GPS receiver when you tap this control.

### 2.2.3 POI



Point Of Interest (POI) is a menu for the user to build a database for easy access. You can mark or save POI's any place on the map with a flag icon and letters. Unlimited POI can be stored and it is only up to the availability of your Pocket PC's memory.

**Warning** : The POI database will be deleted if the battery power of your Pocket PC runs out.

#### **Add Current Position**

When GPS is enabled, you can add your current position, which will be saved automatically as a POI. Enter a name in the input box and tap OK. You will see a flag icon with the name marked on your current position of the map.

**Add POI**

Tap the point on the map to add your POI and enter a name in the input box. You will see a flag icon with the name on the map, which will be saved in the POI database.

**Find POI**

All the POI's you've entered will display when you tap this icon. Tap one of the POI's in the list and the Navigator will display the location of the POI on the map.

**Delete POI**

Use this option to delete a saved POI from the database.

**Select Destination**



When GPS is enabled, the POI's you've saved will display. Select one of the POI in the list as your destination and the direction indicating arrow (red) will appear along the edge of the map. The arrow will display and point at the destination you've selected only when the destination is beyond screen display. The arrow will automatically disappear when your destination is in view of the screen map.

### 2.2.4 MSG




This control is for two-way messaging via the wireless Internet and is inactive in version 3.1 software.

### 2.3 Icons

Icon	Description
	<p><b>Switch over to GPS interface</b> The display will switch over to the GPS interface from the map mode interface when you tap this icon</p>
	<p><b>Panning control</b> The control will switch over to the panning and zooming mode when you tap this icon.</p> <p><b>Panning</b> : Draw a line in the direction you want to move the map and the map will move in that direction. The longer you draw a line, the further the map will move.</p> <p><b>Circle Zoom in</b> : Draw a circle whenever you want to zoom in. The smaller the circle, the higher the zoom in.</p>



	<p><b>Please note</b> : There is no zoom out control in the Panning mode. You must touch the Zoom in/out icon to zoom out. Refer to the following zoom in/out control to use zoom out mode.</p>
	<p><b>Zoom in/out control</b> The control will switch over to the zoom in and out mode when you tap the icon.</p> <p><b>Zoom out</b> : Draw a line straight down on the map and the map will zoom out.</p> <p><b>Zoom in</b> : Draw a line straight up on the map and the map will zoom in.</p> <p>The length of the line affects the zooming rate. The longer the line is drawn, the higher the rate of zooming.</p>
	<p><b>Rotating Control</b> The control will switch over to the rotating map mode when you tap this icon.</p>



**Rotating map** : The map will turn in the direction of the line you draw. The center of the turn is the center of the display. The azimuth turns around in the same direction as the map. The map will return to the default setting (North is upward) when you touch the North Up control.



**Tracking control**

This control is used to transmit a position data for the third party via the wireless Internet and is inactive in version 3.1 software. This will be available with future software versions.



**Marking a Point Of Interest (POI)**

This is the same control as ADD POI in the menu bar.







**Sending a message**

This is to send messages to a third party via the wireless Internet and is inactive in version 3.1 software. This will be available with future software versions.





	<p><b>Connection with network server Indication</b></p> <p>This icon will change its' red color to green while your Pocket PC is on line with the network server via wireless Internet. This is inactive in version 3.1 software.</p>
	<p><b>Transmitting position data Indication</b></p> <p>This icon will change its' red color to green while the Navigator is transmitting the current position data to the network server via wireless Internet. This is inactive in version 3.1 software.</p>
	<p><b>Retrieving GPS data Indication</b></p> <p>This icon will blink while the position data is being retrieved from the GPS receiver.</p>
	<p><b>Compass</b></p> <p>This is an azimuth and the North up is the default setting. The azimuth should rotate as the map rotates.</p>

## 2-4 Error Messages

Message	Description and Solution
<p><b>"No input data"</b></p>	<p>Navigator failed to retrieve the position data from the GPS receiver.</p> <ol style="list-style-type: none"> <li>1. Enable the GPS receiver by touching the GPS stop control menu. Disconnect your GPS receiver and reconnect it to the Pocket PC properly.</li> <li>2. Check the location of the GPS antenna. The antenna should be placed in clear view of the sky.</li> <li>3. When you have the same error message despite above steps, open <u>GPS setup</u> in the <u>Open</u> menu and change the <u>Port number</u> by selecting one of five COM ports that can be available for Navigator to communicate with your GPS receiver.</li> </ol>
<p><b>"Failed to connect to GPS!"</b></p>	<p>Your Pocket PC is not connected to the GPS receiver. Connect your GPS receiver to the Pocket PC properly.</p>
<p><b>"You should start your GPS"</b></p>	<p>Your GPS is not enabled. Open <u>GPS</u> menu and touch the <u>GPS Start</u> menu.</p>

### **3. Customer Service**

PASSCOMM

Phone : (82-2) 874-0285

Fax : (82-2) 872-0285

Email : [onlinenavi@gissoft.com](mailto:onlinenavi@gissoft.com)

Web Site : [www.onlinenavi.com](http://www.onlinenavi.com)

Your frequent visit to our Website is recommended to download the latest Navigator software upgrade.

### **4. Safety Control**

Navigator may contain error and omissions. The map may be out of date with recent road changes.

Do not attempt to use Navigator while you are driving a car. It is highly recommended for the passenger to navigate while driving.

Navigator may not be used for any purpose in which failure of the safety control could lead to personal injury and physical damage.